

**Task:****Application field:** Agriculture**Material:** Wood fibres**Feed size:** 200-400 mm**Feed quantity:** 10 g (per grinding jar)**Material specification(s):** fibrous, dry**Customer requirement(s):** < 100 µm**Subsequent analysis:** not defined**Solution:****Selected instrument(s):** Planetary Ball Mill PM 100**Configuration(s):** Grinding jar "comfort" stainless steel 500 ml;  
20 x grinding ball stainless steel ø 20 mm**Parameter(s):** Revolution speed 550 rpm; reverse mode (interval 3 min.)**Time:** 10 min.**Achieved result(s):** 74 % < 100 µm**Remark(s):** The grinding jar was totally filled with material.**Recommendation:** For the fine grinding of dry wood fibres the Planetary Ball Mill PM 100 is suitable under the above mentioned conditions.

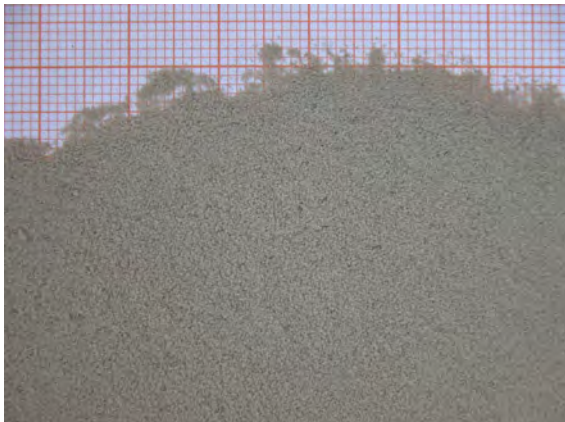
### Pictures of the sample



**Fig. 1:** Initial wood fibres sample



**Fig. 2:** Initial wood fibre sample



**Fig. 3:** Ground wood fibres in PM 100 after 10 min. of processing

The application report is based solely on the processing of the available sample material in the indicated amount. No legal claims shall be derived from this test report.

Subject to technical modification and errors.

© Retsch GmbH - [www.retsch.com](http://www.retsch.com) - [lab@retsch.com](mailto:lab@retsch.com)